

# COMPANY PROFILE 2024

PT Petrosea Tbk

A multi-disciplinary contract mining,  
EPC and oil & gas services company





1

**Petrosea  
Overview**

2

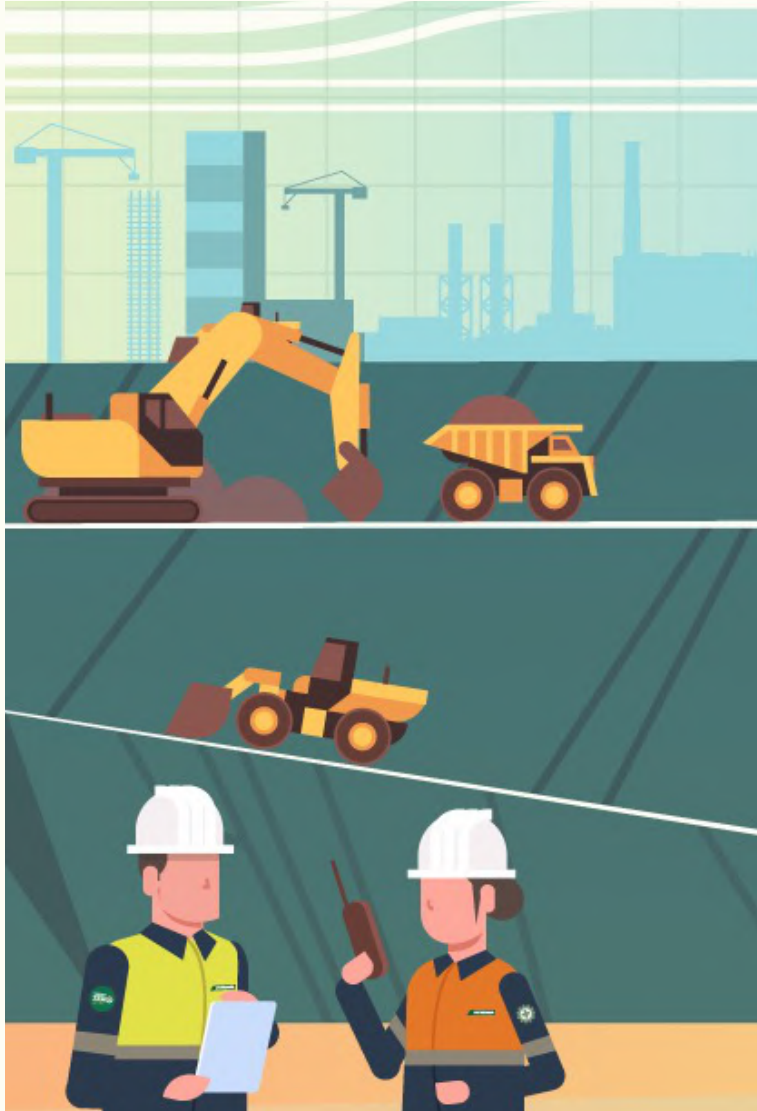
**Our  
Business**

3

**Our  
Commitments**

4

**Project  
Capabilities &  
Highlights**



## PTRO

Petrosea is a sustainable resources company and multi-disciplinary mining, EPC as well as oil & gas services company that is fully committed to prioritize the aspects of ESG as a continuation of its sustainability strategy.

With a track record of achievement for over 52 years, we offer a competitive advantage through our ability to provide complete pit-to-port mining solutions, integrated engineering, procurement and construction capabilities as well as logistic support, whilst demonstrating absolute commitment to safety, health & environment, quality management and business integrity.

Petrosea is also committed to adhering to sound principles of corporate governance and has adopted corporate governance practices that support the effective functioning of our Management and all supporting elements as a public listed company.

Petrosea has been listed on the Indonesia Stock Exchange (IDX: PTRO) since 1990 and was the first publicly listed Indonesian engineering and construction company in Indonesia.

In 2019, Petrosea was selected by the World Economic Forum as the only mining company and Indonesian owned company to join the Global Lighthouse Network due to our success in implementing Industry 4.0 technologies to drive performance.

PT Petrosea Tbk is controlled by PT Kreasi Jasa Persada which is wholly-owned by PT Petrindo Jaya Kreasi Tbk.

# OUR VISION & MISSION



## VISION

To be a leading service provider in mining, oil & gas and infrastructure in South East Asia.

## MISSION

To deliver innovative solutions for mining, oil & gas and infrastructure to the satisfaction of all clients and stakeholders.



# ACT>ON

AGILE CONNECTED TRUSTED INNOVATIVE OPEN MINDED NURTURING



## AGILE

**We adapt to change**

Ability to adapt in different business situation and challenges



## INNOVATIVE

**We improve ourselves with no limitations**

Ability to think out of the box and comes with new solution



## CONNECTED

**We stay updated to the industry, technology and people**

Ability to stay update with new information and changes related with the industry



## OPEN MINDED

**We listen to and explore new ideas**

Ability to open and seek for new ideas



## TRUSTED

**We deliver value to our stakeholders whilst demonstrating commitment towards the highest ethics and business conduct**

Ability to act and perform in a trustworthy manner



## NURTURING

**We care for our safety, health, environment and community**

Ability to grow and nurture safety, health & environment in the community

# MILESTONES



1972

Incorporated in Jakarta, Indonesia as PT Petrosea International Indonesia



1984

Acquired by Clough Limited, Australia



1990

Listed on the Jakarta and Surabaya Stock Exchanges (now Indonesia Stock Exchange) as PTRO, with the Company name changed to PT Petrosea Tbk



2017

Officially inaugurated Petrosea Offshore Supply Base (POSB) Sorong to provide support and services for the oil & gas sector in the eastern Indonesian region



2015

Petrosea through one of its subsidiaries PT POSB Infrastructure Indonesia acquired 51.25% stake in PT Mahaka Industri Perdana



2009

Acquired by PT Indika Energy Tbk



2018

Petrosea acquired PT Kuala Pelabuhan Indonesia and released its shares in PT Santan Batubara



2019

Petrosea became the only mining company and only Indonesian owned company to be selected by the World Economic Forum into the Global Lighthouse Network



2022

Acquired by PT Caraka Reksa Optima



2024

Acquired by PT Kreasi Jasa Persada



## Board of Commissioners



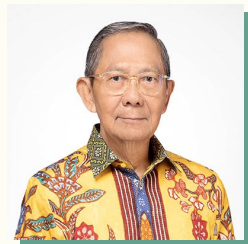
**Osman Sitorus**

President Commissioner  
concurrently  
Independent Commissioner



**Erwin Ciputra**

Commissioner



**Prof. Ginandjar  
Kartasasmita**

Commissioner



**Djauhar Maulidi,  
S.E., M.B.A.**

Commissioner



**Jenderal Pol. (Purn.)  
Drs. Sutanto**

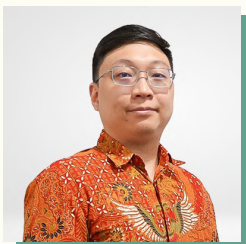
Commissioner



**Setia Untung Arimuladi,  
S.H., M.Hum.**

Independent Commissioner

## Board of Directors



**Michael**

President Director



**Kartika Hendrawan**

Director



**Ruddy Santoso**

Director



**Meinar Kusumastuti**

Director



**Iman Darus Hikhman**

Director

# AWARDS & RECOGNITIONS - 2024



All of our awards and recognitions are a manifestation of Petrosea's commitment towards good corporate governance as an intangible asset that plays an important role in value creation within the Company.



PROPER Nasional (PROPERNAS)  
For Environmental Management



PROPER Daerah (PROPERDA)  
For Environmental Management



ADITAMA and UTAMA Awards



Corporate Emission Transparency  
Award 2024



Foundation for International Human  
Rights Reporting Standards (FIHRRST)

# AWARDS & RECOGNITIONS - 2023



14th IICD Corporate Governance Award 2023



Bisnis Indonesia Awards 2023



Corporate Emission Transparency Award 2023



PROPER Daerah (PROPERDA) For Environmental Management



Foundation for International Human Rights Reporting Standards (FIHRRST)



HSE Indonesia Award 2023



SAP Innovation Awards 2023



Tricentis APAC Innovation Awards 2023



# AWARDS & RECOGNITIONS - 2022 (1)



Indonesia Corporate Secretary Award 2022



ESG Disclosure Awards 2022



Bisnis Indonesia Awards 2022



13th IICD Corporate Governance Award 2022



PROPER Daerah (PROPERDA) For Environmental Management



PROPER Nasional (PROPERNAS) For Environmental Management



Corporate Emission Transparency Award 2022

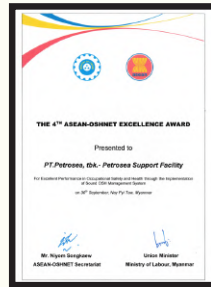


IDC Future Enterprise Awards Asia Pacific 2022

# AWARDS & RECOGNITIONS - 2022 (2)



IDC Future Enterprise Awards  
Indonesia 2022



ASEAN-OSHNET Excellence  
Awards 2022



Indonesia Safety Excellence  
Award (ISEA) 2022



Indonesian Sustainable Development  
Goals Award (ISDA) 2022



COVID-19 Prevention & Countermeasure Program Award  
From Ministry of Manpower



HIV/AIDS Prevention & Countermeasure Program Award  
From Ministry of Manpower



Zero Accident Award  
From Ministry of Manpower

# OPERATIONAL MAP & MAJOR CLIENTS



## CONTRACT MINING

1	Kideco Jaya Agung	2028
2	Kartika Selabumi Mining	2027
3	Central Cipta Murdaya	2025
4	Indo Bara Pratama	2027
5	Cristian Eka Pratama	2038
6	Sumberdaya Arindo	2026
7	Pasir Bara Prima	2032
8	Global Bara Mandiri	2032
9	Kapuas Bara Utama	2024
10	Tamtama Perkasa	2031
11	Borneo Bangun Banua	2025

## ENGINEERING, PROCUREMENT & CONSTRUCTION

12	Freeport Indonesia	2026
13	Flour-Petrosea JO	2024
14	BP Berau Ltd.	2025
15	Vale Indonesia	2026
16	Masmindo Dwi Area	2025
17	Freeport Manyar Refinery	2024

## LOGISTICS AND SUPPORT FOR OIL & GAS SERVICES

18	CSTS Joint Operation, Saipem Indonesia, BP Berau Ltd and Ensco Sarida Offshore	On Going
----	--	----------



## PTRO.JK

**1972** Established

**1990** Listed on IDX

**2024** Acquired by  
PT Kreasi Jasa Persada <sup>3</sup>

Market Capitalization Rp 13,84 trillion (Rp 13,725/share) <sup>1</sup>

Number of shares: 1,008,605,000

1. As of 24 September 2024

## Ownership Structure <sup>2</sup>

**41.52%**

PT Kreasi Jasa Persada <sup>3</sup>

**34.17%**

PT Caraka Reksa Optima

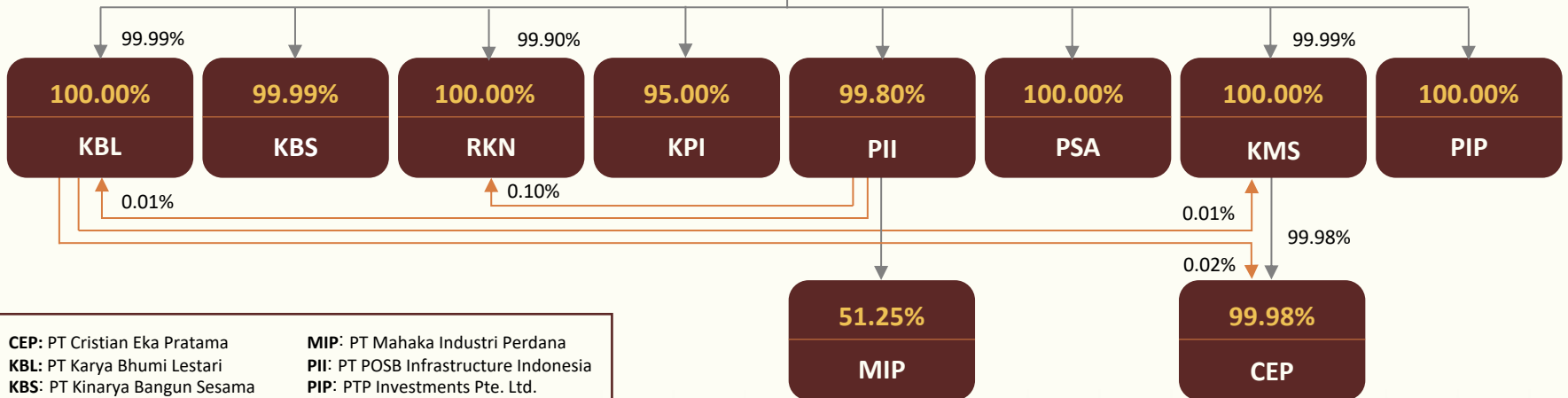
**24.31%**

Public



2. Shareholders as of 30 September 2024 with 5% shares or more  
3. Controlling shareholder is owned by PT Petrindo Jaya Kreasi Tbk

# SUBSIDIARY COMPANIES



- |  |  |
|--|--|
| <b>CEP:</b> PT Cristian Eka Pratama      | <b>MIP:</b> PT Mahaka Industri Perdana       |
| <b>KBL:</b> PT Karya Bhumi Lestari       | <b>PII:</b> PT POSB Infrastructure Indonesia |
| <b>KBS:</b> PT Kinarya Bangun Sesama     | <b>PIP:</b> PTP Investments Pte. Ltd.        |
| <b>KMS:</b> PT Kemilau Mulia Sakti       | <b>PSA:</b> Petros Solution Pty. Ltd.        |
| <b>KPI:</b> PT Kuala Pelabuhan Indonesia | <b>RKN:</b> PT Rekakarsa Karya Nusantara     |





**1**

**Petrosea  
Overview**

**2**

**Our  
Business**

**3**

**Our  
Commitments**

**4**

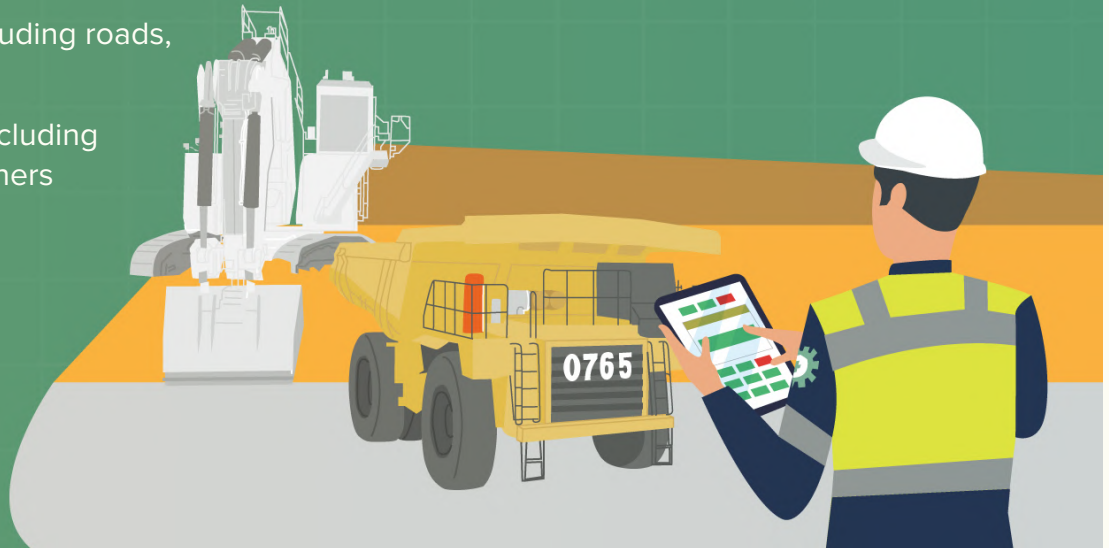
**Project  
Capabilities &  
Highlights**

## CONTRACT MINING

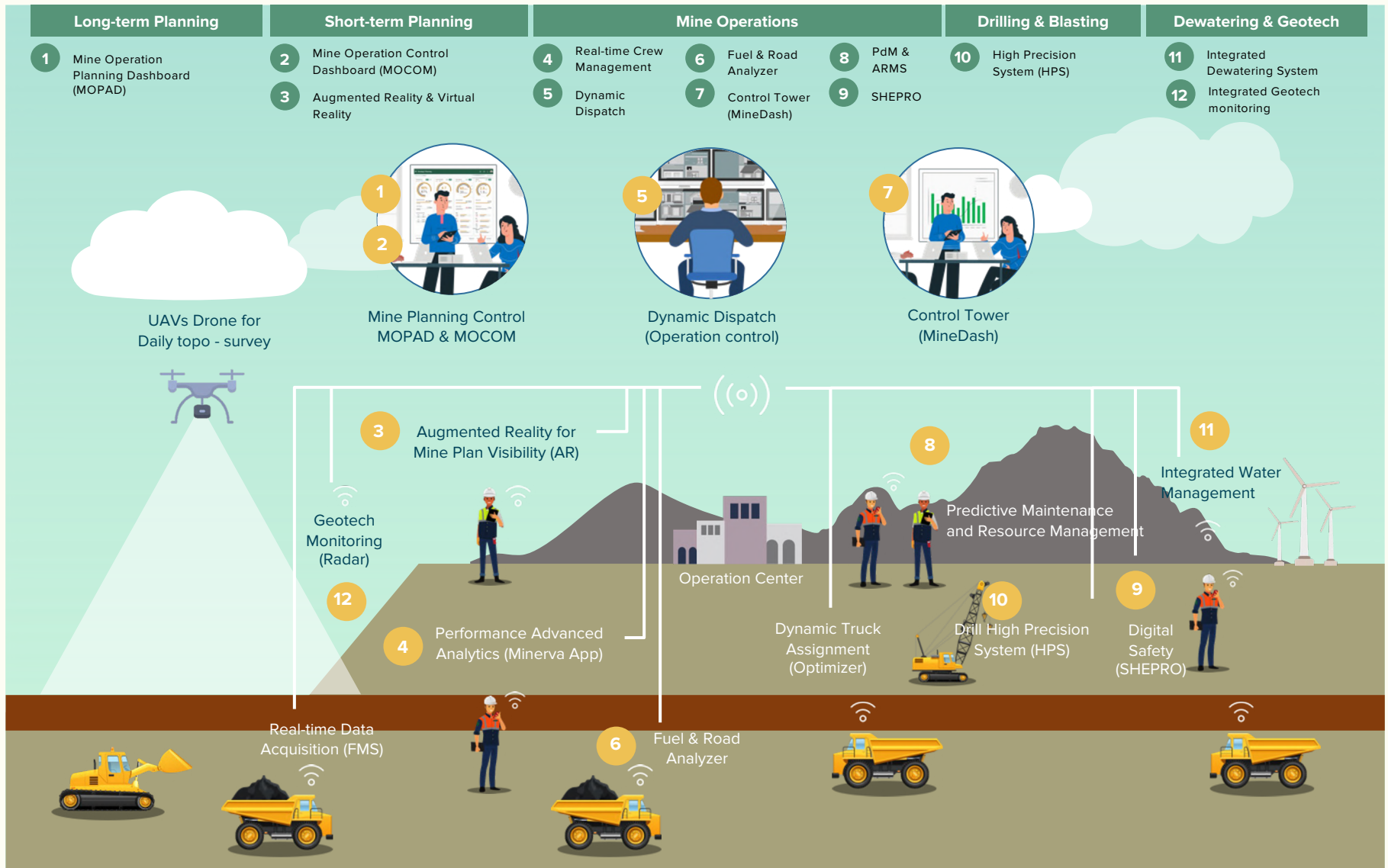
Petrosea differentiates its mining services from competitors by offering integrated mining solutions tailored to the requirements of each project, supported by Minerva Digital Platform which leverages the latest technology to enhance operational efficiency and productivity. Since 2022, Petrosea has the capability to monitor and control operations at multiple sites by utilizing real-time data through its Remote Operations Center (ROC) located at the Company's headquarters aimed at driving operational excellence and sustainable profitability.

Petrosea offers a wide range of project services from pit-to-port, including:

- Open pit contract mining services
- Civil and infrastructure construction, including roads, tailing dams, and site facilities
- Mining project management services, including equipment and operators from mine owners as well as subcontractors
- Technical and feasibility study consulting services
- Mine planning and optimization services
- Minerva digital platform solution that can be applied in mining operations



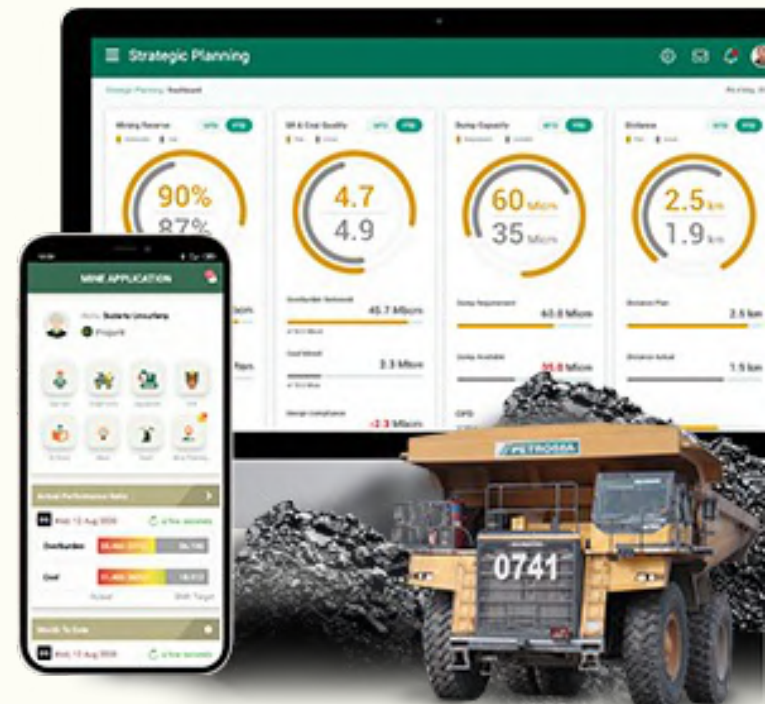
# END-TO-END MINE OPERATION CAPABILITY



## PROJECT MINERVA

Project Minerva, which stands for "**Mining Engineering and Construction Advanced Analytics**", as a strategic step in carrying out the digital transformation of all our mining operations to catalyze Petrosea's transformation in order to ensure sustainable superior performance in the years to come.

In 2019, Petrosea was selected by the World Economic Forum as the only mining company and the only Indonesian owned company to join the Global Lighthouse Network due to our success in implementing Industry 4.0 technologies.





# REMOTE OPERATIONS CENTER (ROC)



Petrosea monitors and controls operations at multiple sites by utilizing real-time data through its Remote Operations Center (ROC) located at the Company's headquarters in order to drive operational excellence and sustainable profitability.



# ENGINEERING, PROCUREMENT & CONSTRUCTION

As a company with a long track record and experience in handling multidisciplinary construction work from conceptual initial design to project completion delivery, Petrosea combines the use of latest technologies, outstanding people capabilities, as well as proper implementation of processes and procedures to enable the Company to consistently deliver innovative and cost-effective EPC solutions to all valuable customers.

Petrosea provides the full range of engineering, procurement, construction and operations services, including:

- Technical due diligence
- Conceptual to full bankable feasibility studies
- Front end engineering design
- Detail engineering design
- Project management
- Plant and equipment hire
- Procurement and logistics
- Operation and maintenance services
- Construction
- Commissioning



# LOGISTICS AND SUPPORT FOR OIL & GAS SERVICES

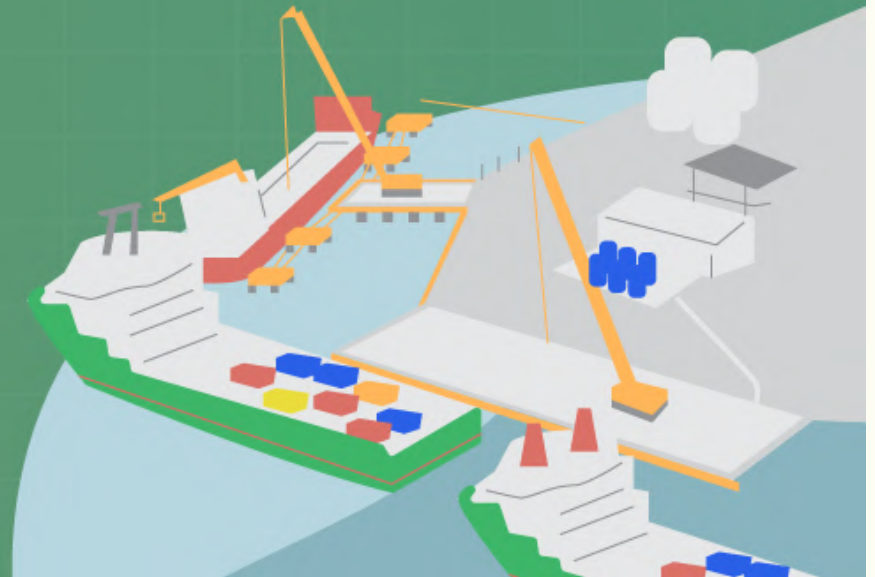
Through its Petrosea Offshore Supply Base (POSB) located in Sorong, West Papua, Petrosea provides the oil & gas industry in the region with a wide range of cost-effective supply base services delivered to international standards. With high-quality supply base management capabilities and a strong focus on safety, health & environment aspects, POSB Sorong delivers safe and efficient services to support offshore oil & gas production, development and exploration throughout Indonesia.

### Logistics & Support Services

- Bonded Logistics Center (PLB)
- Logistics & freight forwarding services

### Supply Base Management

- Quayside operations
- Transportation and port management
- Other services such as manifestation, handling material parts, shipping agents, waste management, bulk management, tracking goods, inspection, certification, and providing technology services





# POSB SORONG FACILITIES



## BONDED LOGISTICS CENTER (PLB)

Bonded zone area of up to 11,500 m<sup>2</sup>

## DRY BULK PLANT

All bulk plants are hard-piped to the quay line below the working level of the quayside, so not to interfere with quayside operations.

## LIQUID MUD, WATER BASED MUD & BRINE PLANT

Capable to operate two separate mud plants with a capacity in excess of 8,000 bbl and positioned at close proximity to the quayside. Each plant is hard-line to the quay line below the working level of the quay.

## BASE OIL STORAGE

POSB has 2,000 cubic meters or 12,578 bbl of base oil storage capacity located on 900 m<sup>2</sup> area covered with bund wall protection from hydrocarbon spillage.

## BERTHING & QUAYSIDE

The POSB quay has a working area of up to 2,500 m<sup>2</sup> with a quay consisting of:

- 132m main jetty : Draft 9.5m
- 77m heavy lift jetty : Draft 7m
- 22m LCT landing area : Draft 4.1m





**1**

**Petrosea  
Overview**

**2**

**Our  
Business**

**3**

**Our  
Commitments**

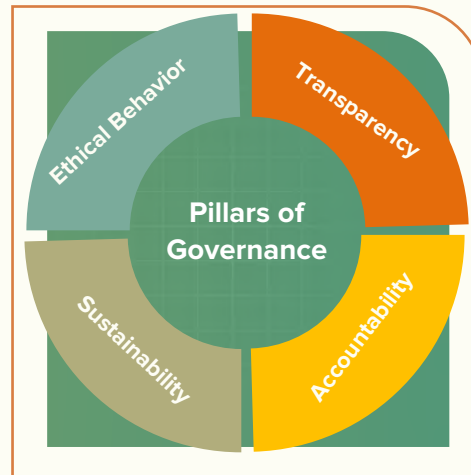
**4**

**Project  
Capabilities &  
Highlights**



**Strategic Initiative**

Petrosea launched its 3D strategy, which is Diversification, Digitalization & Decarbonization, as the Company's enabler and key pillar to continue to develop our value proposition to our clients, investors and stakeholders.



**Governance**

Petrosea's continuously strives to ensure that the principles of GCG become part of the Company's culture and are implemented within all elements of the Company.



**ESG**

In conducting its operational activities, Petrosea prioritizes the Environmental, Social & Governance (ESG) concept in preserving the environment, creating self-sustained communities, as well as implementing good corporate governance in order to ensure its business sustainability.



# SOCIAL COMMUNITY SUSTAINABILITY



Through its social responsibility programs, Petrosea strives to enhance the economic and social welfare of communities around the Company's operational areas.



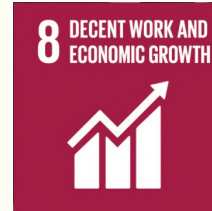
- Empower local labor



- Preventing Covid-19 spread
- Health education
- HIV / AIDS and anti-drug counseling
- Provision of clean water installations



- Revitalizing school buildings
- Stationery and school supplies
- Teacher training development



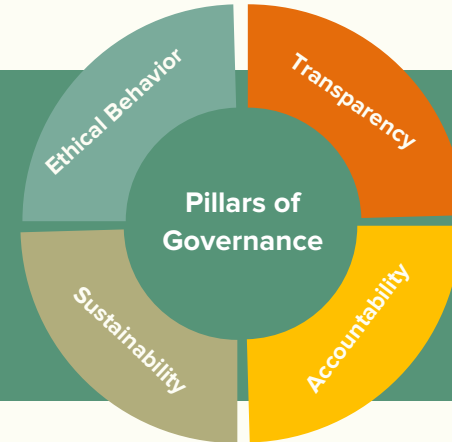
- Community empowerment programs to increase and equalize the economy of the surrounding community



- Protect the environment by providing water trucks
- Conducting greening / tree planting activities
- Empowering the community in processing waste used goods into a source of income



Petrosea is committed to adhering to the sound principles of Good Corporate Governance (GCG) and has adopted corporate governance practices to ensure the effective functioning of our Management and all supporting elements as a public listed company. By applying the principles of GCG, we ensure that Petrosea is an accountable, independent and transparent company for all of our stakeholders.



## TRANSPARENCY



Corporate Website



Annual Report



Sustainability Report



Company Update



News & Press Release



ISO 37001:2016,  
ISO 14001:2015 &  
ISO 45001:2018

## ACCOUNTABILITY

Financial Statements  
audited by:



## ETHICAL BEHAVIOR

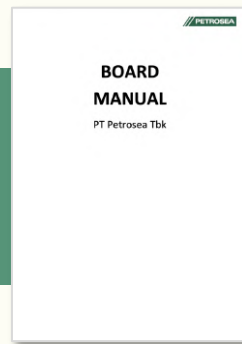


## SUSTAINABILITY



Our GCG infrastructure ensures that the Company implements international best practices to optimize our strategy execution and overall performance through compliance with the aim of creating sustainable value for our shareholders while also prioritizing the interests of all stakeholders.

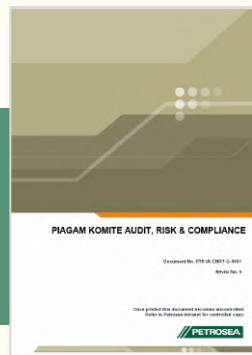
**Board Manual**



**Delegation of Authority**



**Audit, Risk & Compliance Committee**



**Nomination & Remuneration Committee**



**Project & Investment Committee**



**GCG Manual**





**1**

**Petrosea  
Overview**

**2**

**Our  
Business**

**3**

**Our  
Commitments**

**4**

**Project  
Capabilities &  
Highlights**

---

# PROJECT & CAPABILITY HIGHLIGHTS

With a track record of excellence for over 52 years, Petrosea has extensive experience of executing projects across the Indonesian archipelago for the mining, EPC and oil & gas services sectors.



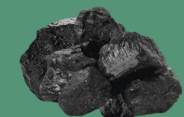




## KPC Pit K Coal Mining Contract

PT Kaltim Prima Coal

East Kalimantan, 1991 - 1995



Petrosea undertook this coal mining contract in 1991 which involved the removal of over 10 million BCM of overburden, winning and hauling and over 2.2 million tons of coal to the client's run-of-mine hoppers. The mining operations ran 24 hours per day, with monthly rates of approximately 400,000 BCM of overburden and 100,000 tons of coal achieved.



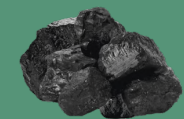


## Danau Mas Hitam Coal Mining Development

PT Danau Mas Hitam

Bengkulu, 1991

Petrosea's scope of work for this project included the delivery of coal to the port of Pulau Baai, overburden stripping, crushing, washing and transportation. In addition, Petrosea also undertook the initial infrastructure development of roads, bridges, camps, offices, workshops, power and water reticulation systems.







**Minahasa Gold Project**  
**PT Newmont Minahasa Raya**  
 North Sulawesi, 1995 - 2001



Starting in 1995, Petrosea provided contract mining services at the Hard Rock Gold Mine Project, located in Mesel, North Sulawesi. Under the agreement, Petrosea was contracted to drill, blast, load and haul over 12 million m<sup>3</sup> of waste and 2.5 million m<sup>3</sup> of gold bearing ore over a five-year period.

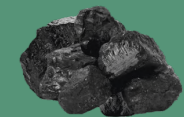




## BBE Contract Mining & Extension

Bukit Baiduri Enterprise

East Kalimantan, 1996 - 2002



Petrosea was awarded this three-year coal mining contract for the production of 700,000 tons of coal per year. This contract involved the overburden removal as well as winning and hauling of a total of 2.1 million tons of coal from the client's operations on the Mahakam River in East Kalimantan. In May 1999, Petrosea was awarded a three-year contract extension to mine and haul overburden and coal.





## Gunung Bayan Pratama Coal Project

PT Gunung Bayan Pratama Coal

East Kalimantan, 1999 - 2015



Petrosea completed work for a duration of almost 16 years to strip 30 - 55 million BCM of overburden per annum and expose clean coal at this remote mine site located in Muara Pahu, West Kutai, East Kalimantan. Initial annual production was sufficient to allow coal to be transported by the client over 490 KM to their coal terminal in Balikpapan, East Kalimantan. The stripping operations increased to suit GBP's coal production rates which reached up to 19 strip ratios over the contract term.





## Granite Rock Loading & Hauling Contract

PT Karimun Granite

Karimun Island, 2000 - 2006



Initially awarded a three-year contract to mine and haul granite from this large quarry on Karimun Island, but due to Petrosea's dedicated performance, Karimun Granite awarded a further two-year extension contract which included the provision of heavy equipment to support the development of the total resource. On average, Petrosea extracted 30,000 - 500,000 tons of granite per month, with the scope of work also including rock loading and blasting, plant and equipment hire, construction and maintenance of all ramps and bench access ramps, as well as excavation and haul of overburden to waste dumps.





## Pagerungan Besar Gas Field Development Phase 2

Atlantic Richfield Bali North Inc. (ARCO)

East Java, 1991 - 1993

This EPC contract was for a major gas field development project on Pagerungan Besar Island. Stage 1 (engineering) was completed in 1991 by a dedicated project office established in Perth, Western Australia, while Stage 2 (procurement & construction for a gas processing plant, accommodation village, airstrip, tankage, harbor and all associated support works) was controlled from a project management office in Surabaya and project offices in Jakarta.





## Amamapare Cargo Wharf Project

PT Freeport Indonesia

Papua, 1993

In just nine months, Petrosea completed the new Amamapare cargo wharf, employing around 600 personnel located both on-site in Papua and Petrosea's Tanjung Batu fabrication yard in East Kalimantan. The 260 meter by 18 meter wharf space frame structure was fabricated at Tanjung Batu in six separate modules. Some 2,000 tons of structural steel was utilized in the wharf module structures and ancillary fabricated items. The modules were loaded onto barges and shipped to Papua for installation.





## West Seno Deepwater Facilities & Pipelines

Unocal Corporation

East Kalimantan, 2001 - 2003

Petrosea, together with Clough Limited and Hyundai Heavy Industries jointly developed the West Seno field, which was Asia's deepest offshore production oil & gas field located in the Makassar Strait. Petrosea's scope of work included all onshore pipelines and the LEX plant modification at the Santan gas plant in East Kalimantan as well as logistical and administration support.





## **Babo Airstrip Upgrade**

**BP Berau Ltd.**

West Papua, 2002 - 2003

Petrosea was awarded this contract to upgrade a remote World War 2 airstrip in Babo, West Papua, as the first regional development of BP Tangguh Ltd. It consisted of the detailed design, procurement, construction and commissioning of the airstrip, helipad and associated facilities, such as a terminal building complete with a hangar and control tower as well as a floating pontoon berth for crew boats.





**KJA Mining Services**  
**PT Kideco Jaya Agung**  
East Kalimantan, 2011 - 2028



Petrosea first began this project in 2011 to provide open pit mining services, including overburden removal and coal production, as well as civil and infrastructure construction services.





## IBP Project Management & Mine Services

PT Indo Bara Pratama

East Kalimantan, 2022 - 2027



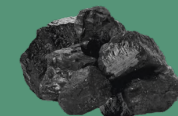
Petrosea entered into this mining services agreement together with its wholly owned subsidiary PT Karya Bhumi Lestari to provide project management, mining operations, mine planning, as well as civil and construction services, while also implementing its Minerva Digital Platform for operational excellence.



## CCM Mining & Equipment Rental Services

PT Central Cipta Murdaya

North Kalimantan, 2021 - 2025



Petrosea entered into this mining services agreement together with its wholly owned subsidiary PT Karya Bhumi Lestari to provide project management, open pit mining services, which includes overburden removal and coal production as well as equipment rental services.

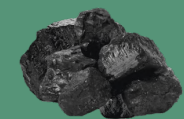




## KSM Project Management & Mine Services

PT Kartika Selabumi Mining

East Kalimantan, 2021 - 2027



Petrosea entered into this mining services agreement together with its wholly owned subsidiary PT Karya Bhumi Lestari to provide project management, mining operations and contractor services.





## Freeport Levee Construction & Stockpile Project

PT Freeport Indonesia

Central Papua, 2015 - 2026

This construction services agreement was first awarded to Petrosea in 2015 with the scope of work to construct the east and west levee, excavate borrow materials from designated borrow areas, as well as transport and stockpile the materials along the levee alignments. This long-term project has been integral in building relations between both companies and helped Petrosea to secure further opportunities with Freeport on other projects throughout Indonesia.





## Freeport GBC Pre-Crusher (SAG3) Construction Services

PT Freeport Indonesia

Central Papua, 2020 - 2023

Through the Fluor Petrosea Joint Operations (FPJO), our scope of work includes the installation of a new Semi-Autogenous Grinding (SAG) mill to support the optimization of the Grasberg Block Cave (GBC) underground mine, with the FPJO team managing the planning, scheduling and sequencing of work, the efficient use of methods, techniques, tools and equipment, as well as a qualified workforce to execute the work.





## Petrosea Rebuild Center

Petrosea Support Facilities

Balikpapan, East Kalimantan

Petrosea Rebuild Center (PRC) was established to provide repair and maintenance services for heavy equipment main components in an integrated, timely and cost-effective manner. In the future, PRC will expand its business market and scale by handling component rebuilding for electric vehicles.



**PT Petrosea Tbk.**

Indy Bintaro Office Park, Building B  
Jl. Boulevard Bintaro Jaya Blok B7/A6  
Sektor VII, CBD Bintaro Jaya  
Tangerang Selatan 15224 - Indonesia

(+6221) 2977 0999

[corporate.communications@petrosea.com](mailto:corporate.communications@petrosea.com)



[www.petrosea.com](http://www.petrosea.com)



[@petrosea.official](https://www.instagram.com/petrosea.official)



[www.linkedin.com/company/petrosea](https://www.linkedin.com/company/petrosea)



[PT Petrosea Tbk.](https://www.youtube.com/PT Petrosea Tbk.)