

PT PETROSEA TBK

COMPANY PROFILE 2026

Engineering the Future of Mining



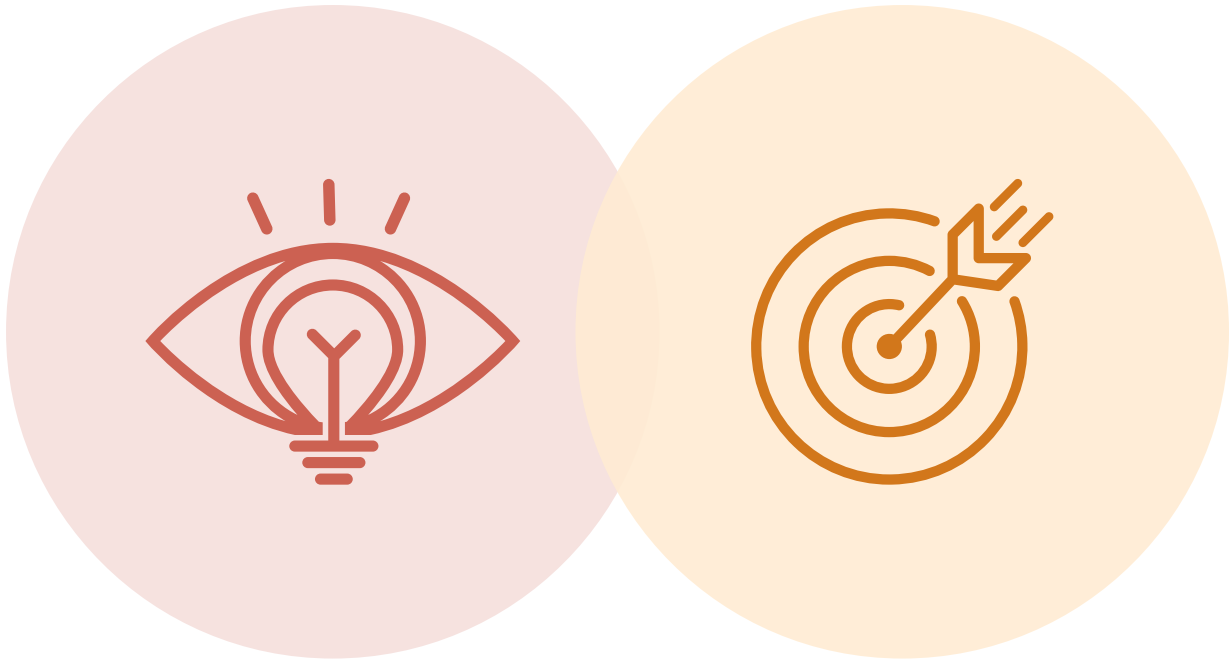
As a multidisciplinary company with a track record of more than five decades, Petrosea Group provides integrated solutions covering the entire value chain from upstream to downstream through its Mining Services, EPC, Offshore Oil & Gas EPCI and Logistics & Support Services business lines to support the mining industry, both mineral & coal and oil & gas, construction, as well as petrochemical in the Asia Pacific and Oceania region.

Through the acquisitions of Hafar, HBS and Scan-Bilt, Petrosea has expanded its business portfolio into non-coal sectors, particularly gold mining services and offshore, as well as onshore oil & gas Engineering, Procurement, Construction & Installation (EPCI) services.



VISION

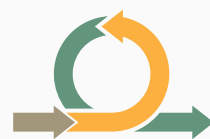
To be a leading service provider in mining, oil & gas and infrastructure in South East Asia



MISSION

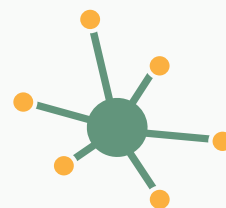
To deliver innovative solutions for mining, oil & gas and infrastructure to the satisfaction of all clients and stakeholders

CORPORATE VALUES



AGILE

We adapt to change



CONNECTED

We stay updated to the industry, technology and people



TRUSTED

We deliver value to our stakeholders whilst demonstrating our commitment towards the highest ethics and business conduct



INNOVATIVE

We improve ourselves with no limitations



OPEN MINDED

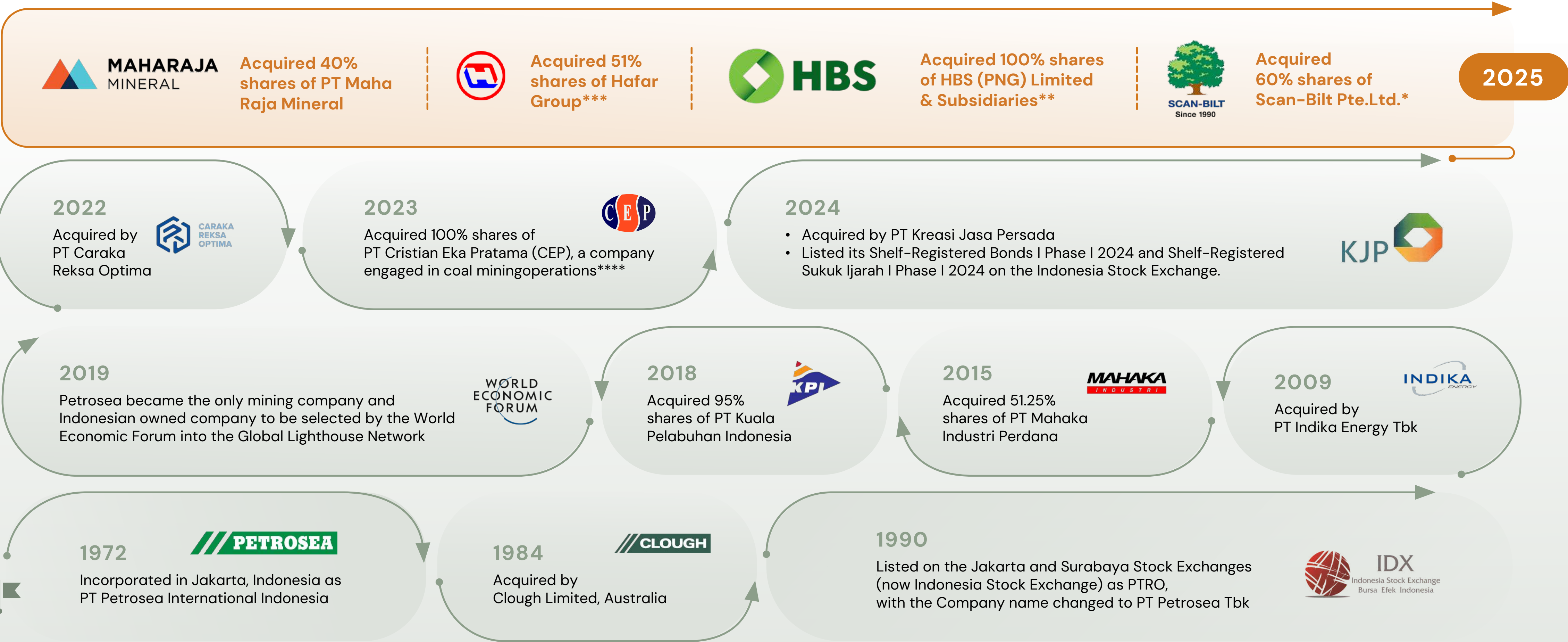
We listen to and explore new ideas



NURTURING

We care for our safety, health, environment and community

MILESTONES



Notes:

* Indirectly through Petrosea Services Solutions Ltd.
** HBS Expac Ltd., Hidden Valley Contractors Ltd., HBS PNG Pty. Limited, HBS Plant Hire Ltd., HBS Solomon Island Limited
*** PT Hafar Daya Konstruksi, PT Hafar Daya Samudera, PT Hafar Capitol Nusantara
**** Indirectly through PT Kemilau Mulia Sakti (99.98%) & PT Karya Bhumi Lestari (0.02%)

MANAGEMENT

BOARD OF COMMISSIONERS



Osman Sitorus
President Commissioner concurrently
Independent Commissioner



Erwin Ciputra
Commissioner



**Djauhar Maulidi,
S.E., M.B.A.**
Commissioner



**Prof. Ginandjar
Kartasasmita**
Commissioner



**Jenderal Pol. (Purn.)
Drs. Sutanto**
Commissioner



**Dr. Setia Untung
Arimuladi, S.H., M.Hum.**
Independent Commissioner

BOARD OF DIRECTORS



Michael
President Director



Kartika Hendrawan
Director



Ruddy Santoso
Director

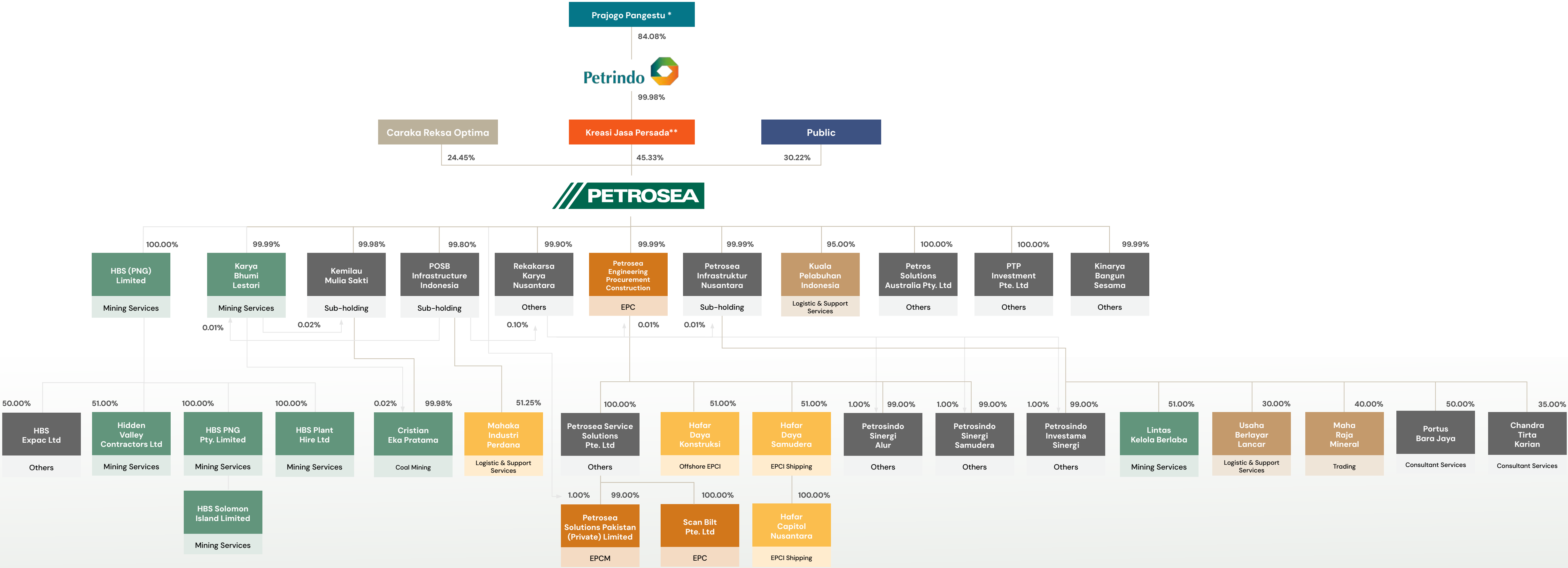


Meinar Kusumastuti
Director



Iman Darus Hikhman
Director

PETROSEA GROUP STRUCTURE



Notes:

Mining Services

EPC

Offshore Oil & Gas EPCI

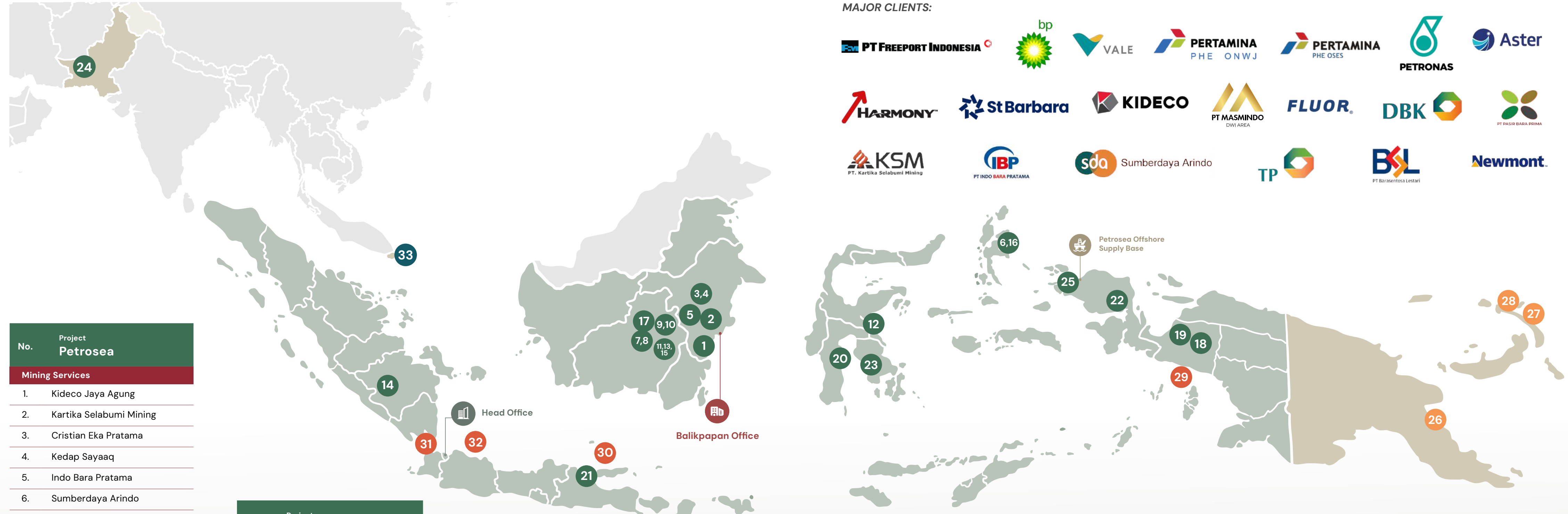
Logistic & Support Services

Others

Notes:

* *Prajogo Pangestu is the Company's ultimate beneficial owner*
** *Controlling Shareholder data as per 9 February 2026*

PROJECT PORTFOLIO



No.	Project Petrosea
Mining Services	
1.	Kideco Jaya Agung
2.	Kartika Selabumi Mining
3.	Cristian Eka Pratama
4.	Kedap Sayaac
5.	Indo Bara Pratama
6.	Sumberdaya Arindo
7.	Pasir Bara Prima
8.	Global Bara Mandiri
9.	Tamtama Perkasa
10.	Borneo Bangun Banua
11.	Bara Prima Mandiri
12.	Vale Indonesia
13.	Multi Tambangjaya Utama
14.	Barasentosa Lestari
15.	Bartim Coalindo
16.	Antam
17.	Daya Bumindo Karunia

No.	Project Petrosea
Engineering, Procurement & Construction	
18.	Freeport Indonesia
19.	Fluor-Petrosea JO
20.	Masmindo Dwi Area
21.	Freeport Indonesia – Manyar Smelter
22.	BP Berau Ltd.
23.	Vale Indonesia
24.	Reko Diq Mining Company (Private) Limited

No.	Project
	Petrosea
	Logistic & Support Services
25.	BP Berau Ltd., Saipem Indonesia, Leighton Contractors Indonesia Freeport Indonesia, Wira Insani

No.	Project HBS Group
	Mining Services
26.	Harmony Gold
27.	Newmont
28.	St. Barbara

No.	Project Hafar Group
Offshore Oil & Gas EPCI	
29.	Freeport Indonesia
30.	Petronas
31.	Pertamina Hulu Energi Offshore Southeast Sumatra
32.	Pertamina Hulu Energi Offshore North West Java

No.	Project
	Scan-Bilt
	Engineering, Procurement & Construction
33.	Aster Chemicals and Energy

MAJOR CLIENTS:



MINING SERVICES

Petrosea Group delivers integrated mining services backed by extensive experience and in-depth industry expertise to support the development of the coal, nickel and gold mining sectors.



With over five decades of experience, Petrosea offers integrated mining solutions tailored to the requirements of each project, including Industry 4.0 technologies through its Minerva Digital Platform designed to solve operational issues in order to provide the best possible services for all clients.

Petrosea has the capability to monitor and control operations at multiple mining sites by utilizing real-time data through its Remote Operations Center (ROC) located at the Company's headquarters.



Through HBS and its subsidiaries, Petrosea provides mining and construction services as well as heavy equipment solutions in Papua New Guinea since the early 2000s.

HBS has built strong partnerships and collaborations with key players in the mining industry, particularly in the gold sector. Currently, HBS supports several major gold mining projects in Papua New Guinea for clients including Newmont, St Barbara and Harmony Gold.



ENGINEERING, PROCUREMENT & CONSTRUCTION

As a leading Indonesian multi-disciplinary mining, energy and infrastructure company, Petrosea has established a strong reputation in providing EPC services that consistently prioritize the aspects of safety and quality.



With decades of experience and integrated capabilities, Petrosea provides end-to-end EPC solutions across the mining, oil & gas, petrochemical, energy transition, and marine infrastructure sectors. Combining technical expertise, advanced project management, and a strong commitment to operational excellence, Petrosea offers comprehensive services from FEED and detailed engineering to procurement, construction, installation, commissioning, and handover—ensuring seamless project execution with strict adherence to schedule, budget, and quality.

Over the years, Petrosea has supported a wide range of blue-chip clients, such as Freeport Indonesia, BP Berau Ltd, Vale Indonesia, Fluor Daniel Indonesia, Masmindo Dwi Area and Daya Bumindo Karunia.



Through Scan-Bilt, Petrosea has provided multidisciplinary EPC onshore capabilities in the chemical processing industry since 1990.

Scan-Bilt has extensive experience executing projects to support key players such as Shell Eastern Petroleum Pte Ltd. / Chiyoda Singapore (Pte) Ltd., Stolthaven Singapore / Chiyoda Singapore (Pte) Ltd., as well as Aster Chemicals and Energy Pte. Ltd., particularly in facility maintenance within Singapore's integrated petrochemical and oil refining hub.



OFFSHORE OIL & GAS EPCI

Petrosea has strengthened its business diversification beyond the coal sector by expanding into offshore oil & gas through Hafar Group—comprising PT Hafar Daya Konstruksi and PT Hafar Daya Samudera—offering integrated EPCI (Engineering, Procurement, Construction & Installation) capabilities.



This expansion is supported by technology adoption and the optimization of multidisciplinary expertise across the entire value chain, from upstream to downstream, to capture the growth potential of the oil & gas industry and support the national downstream development of mineral and energy resources.

Established in 2007, Hafar Group has undertaken various projects to support Indonesia's oil & gas industry, including for PT Pertamina Hulu Energi (PHE), PT Pertamina Hulu Energi Offshore North West Java (PHE ONWJ), PT Saka Energi Indonesia (PGN Saka), Petroliaam Nasional Berhad (PETRONAS) and PT Freeport Indonesia.

This track record of achievement reflects the strong reputation of Hafar in delivering high-quality offshore solutions to meet the requirements of all its clients.



LOGISTIC & SUPPORT SERVICES

Petrosea provides international standard and cost-effective services for the Indonesian oil & gas industry through its Petrosea Offshore Supply Base (POSB) located in Sorong, Southwest Papua.



POSB Sorong delivers high-quality supply base management services with a strong commitment to Safety, Health & Environment (SHE), ensuring safe and efficient operations that support offshore oil & gas production, development and exploration across Indonesia.

Our Supply Base Management services include quayside operations, transport management and port management amongst other complementary services that include, but are not limited to, manifesting, critical spares handling and materials management, ships agency, waste management, bulk management and materials tracking as well as technology services.

Over the years, POSB Sorong has provided services to various blue-chip clients, such as ExxonMobil, Total Indonesia, Eni Bukat Ltd, Chevron Indonesia, Halliburton and BP Berau Ltd.



STRATEGY FOR GROWTH

With a strong foundation built on the consistent implementation of good corporate governance, Petrosea has successfully executed its organic and inorganic business development through diversification, capability enhancement and expansion strategies throughout 2025, further strengthening its position as a leading and resilient company in the industry.

The strategic acquisitions of HBS, Hafar and Scan-Bilt mark Petrosea's diversification into onshore and offshore EPCI, as well as gold mining services across the Asia Pacific region. These acquisitions enhance Petrosea's operational excellence and complete its value chain from upstream to downstream, reinforcing the Company's role in supporting the mining, energy, infrastructure and petrochemical sectors.

In addition, business expansion driven by synergy and operational integration among subsidiaries within the Petrindo Group has established a solid foundation for sustainable long-term growth. This organic development further strengthens Petrosea's position as a trusted business partner for both existing and new clients.



BUSINESS DIVERSIFICATION & NEW CAPABILITIES



HAFAR GROUP – OFFSHORE OIL & GAS EPCI

The Hafar Group is an offshore oil and gas business group that provides Engineering, Procurement, Construction & Installation (EPCI) services, focusing on pipeline and subsea equipment installation while owning a fleet of vessels. Currently, Hafar provides EPCI and marine services to several major oil & gas players in Southeast Asia, including Pertamina, Petronas and Freeport Indonesia.



PT HAFAR DAYA KONSTRUKSI

Provides offshore pipelaying, subsea segment pipe replacement, shore-pull, PLEM installation, calm Buoy (SPM) installation, platform riser-repair/replacement and pre-trenching & post-trenching.



PT HAFAR CAPITOL NUSANTARA

Provides pipelaying barge, anchor handling tug, and pontoon barge services.



PT HAFAR DAYA SAMUDERA

Provides licensed shipping services and operates crew boats, coastal tugs, material barges, general barges, and shallow-water dredgers.

BUSINESS DIVERSIFICATION & NEW CAPABILITIES



GOLD & MINERAL MINING SERVICES

The HBS Group—comprising HBS PNG Pty. Limited, HBS Expac Ltd., Hidden Valley Contractors Ltd., HBS Plant Hire Ltd. and HBS Solomon Islands Limited—has been operating in Papua New Guinea since 2006. The Group provides mobile plant and equipment hire, mining services, the trading of new and used heavy machinery, equipment, vehicles and spare parts, as well as the rental of construction and civil engineering machinery and mobile plant for the mining, construction and heavy equipment sectors.

Through HBS, Petrosea has diversified its business into new geographical markets, including gold mining, to strengthen its strategic advantage and support its long-term investment horizon.

BUSINESS DIVERSIFICATION & NEW CAPABILITIES



EPC FOR OIL & GAS AND CHEMICAL PROCESSING INDUSTRY

The acquisition of 60% of shares in Scan-Bilt Pte. Ltd. represents a significant step in Petrosea's diversification strategy, both through the development of multidisciplinary EPC capabilities in the chemical processing industry and through geographic expansion into the Asia-Pacific and Oceania region, particularly in the oil & gas sector.

Established in Singapore in 1990, Scan-Bilt brings extensive experience and a longstanding track record in multidisciplinary construction and civil engineering, supporting a wide range of strategic projects for the onshore oil & gas processing industry, chemical plant and tankage terminal construction, as well as power generation facilities. Going forward, Petrosea will develop Scan-Bilt as a business hub to support its future business expansion.

SYNERGY BETWEEN PETROSEA & SUBSIDIARIES



SYNERGY WITH HBS GROUP



REGIONAL EXPANSION

Expanding Petrosea Group's footprint into Papua New Guinea by leveraging existing client base and network of HBS, such as Newmont, St. Barbara and Harmony Gold.



HUMAN CAPITAL SYNERGY

Enhancing the scalability and capabilities of Petrosea Group's workforce in order to deliver added value to customers.



PROCUREMENT OPTIMIZATION

Optimizing heavy equipment procurement within Petrosea Group's ecosystem for best pricing and enhanced competitiveness.



SYNERGY WITH HAFAR GROUP



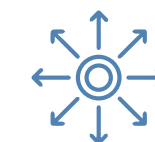
OFFSHORE BUSINESS EXPANSION

Unlocking new business opportunities in offshore EPCI and marine operations (particularly barge vessels for pipeline installation).



BLUE-CHIP CLIENT BASE

Access to a network of leading oil & gas industry clients, such as Pertamina, Petronas and Freeport Indonesia.



ENERGY DIVERSIFICATION

Expanding the business into the LNG and oil & gas industries. Currently, HDS and HCN already hold Sea Transportation Company Business Licenses (SIUPAL).



PROCUREMENT OPTIMIZATION

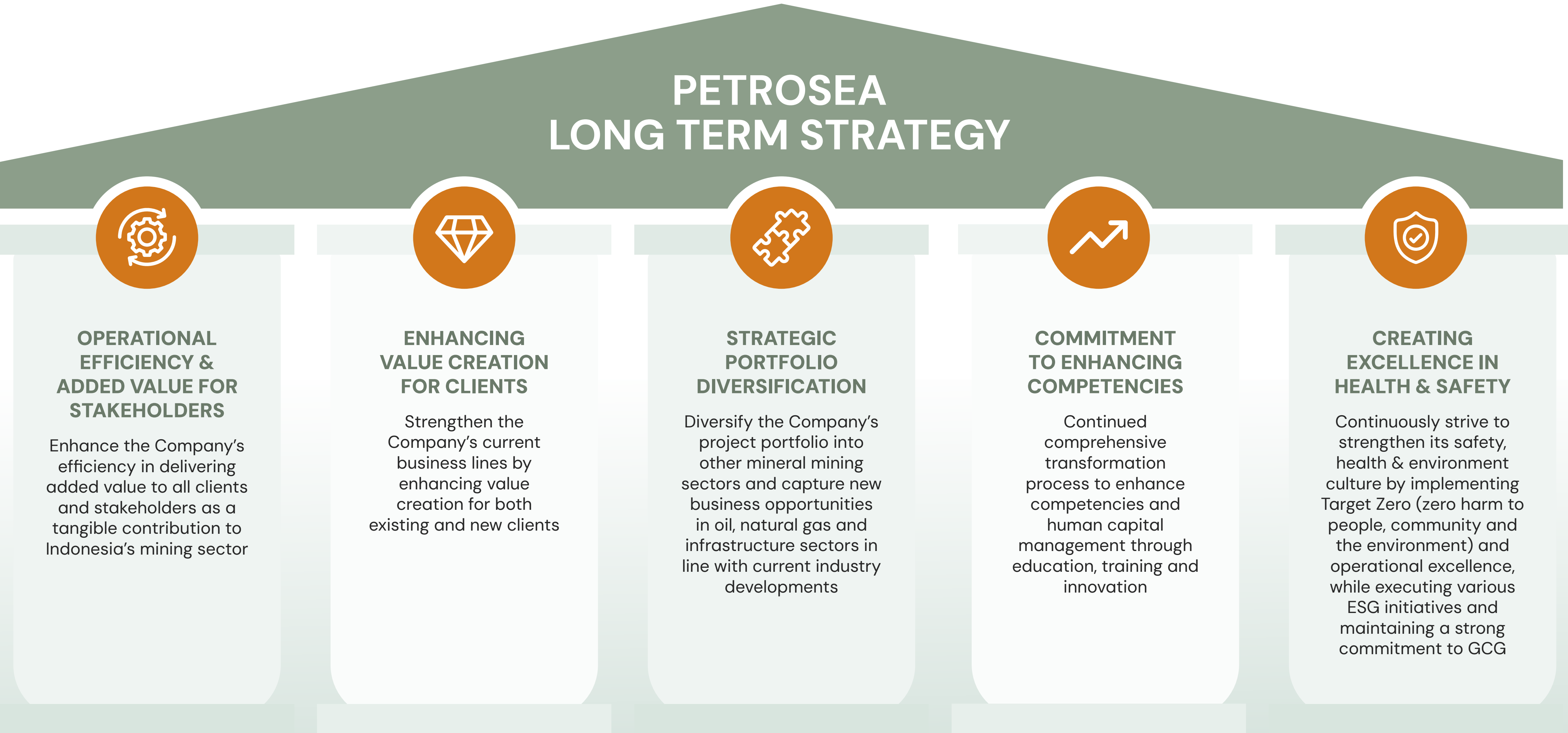
Integrating the supply chain and vessel / equipment procurement in order to improve cost efficiency and gain access to best vendor pricing.



HUMAN CAPITAL SYNERGY

Enhancing the capacity and capabilities of Petrosea Group's workforce in order to strengthen operations and services.

5 PILLARS OF LONG TERM STRATEGY



CORPORATE SOCIAL RESPONSIBILITY

Petrosea implements a range of community empowerment programs and initiatives as part of its commitment to Corporate Social Responsibility (CSR) in supporting sustainable community development, while delivering measurable and lasting benefits to surrounding communities.

EDUCATION

Provision of scholarships, education, training, as well as upskilling programs for teachers and students in surrounding communities



HEALTH

Strengthening maternal and child health, expand and improve access to healthcare services, as well as provision of targeted nutritional support



PETROSEA'S CSR PILLARS

ECONOMIC EMPOWERMENT

Strengthening of local economic development through local workforce recruitment, capacity building for local farmers, as well as provision of food processing infrastructure



ENVIRONMENTAL

Promoting biodiversity conservation and waste management through mangrove development, endemic plant restoration, as well as community-based waste bank initiatives



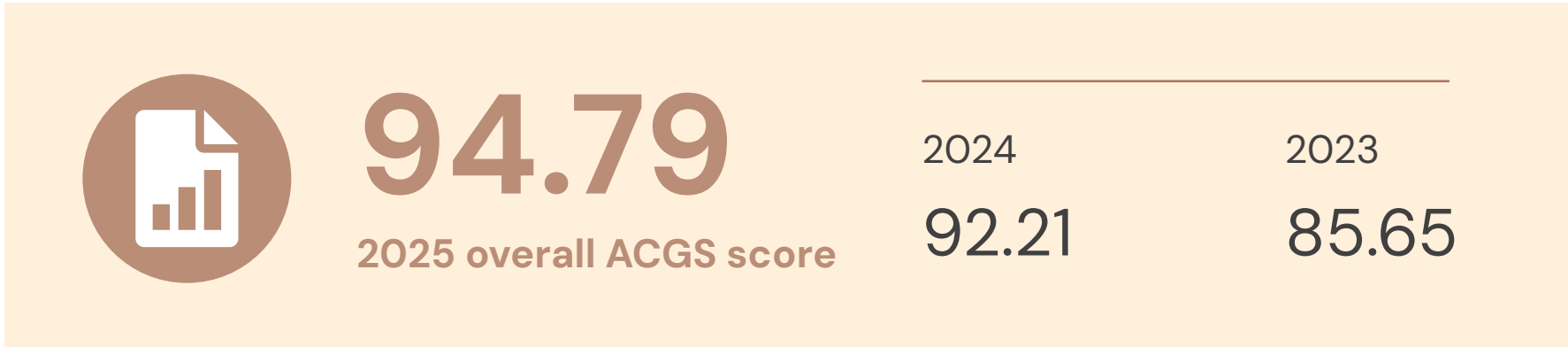
59 CSR programs implemented in 2025

19,982 people
CSR program beneficiaries throughout 2025

83.03 SROI Value
In 2025, Petrosea assessed the impacts of its CSR programs using the Social Return on Investment (SROI) approach, achieving an SROI value of 83.03, which reflects a strong socio-economic impact generated by the programs

CORPORATE GOVERNANCE

As the backbone of the Company’s sustainability, the implementation of corporate governance pillars at Petrosea not only meets minimum compliance requirements in Indonesia, but also adopts international standards as stipulated in the ASEAN Corporate Governance Scorecard (ACGS).



In 2025, Petrosea achieved an “Excellent” rating score of 94.79, surpassing the average score of the Big Cap 100 listed companies on the Indonesia Stock Exchange, based on assessments conducted by an independent party, representing the highest achievement in Petrosea’s more than five decades operating in the mining and construction industry.

As a strategic enabler of Petrosea’s resilience, GCG was implemented through the transparency pillar which earned various recognitions throughout 2025.



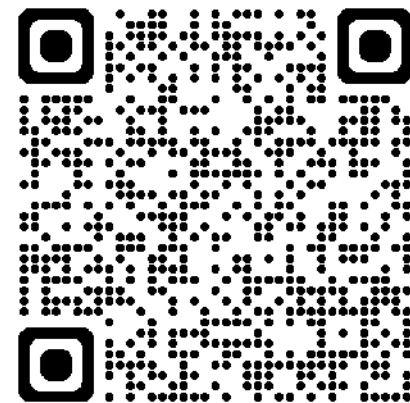
Petrosea’s GCG Infrastructure



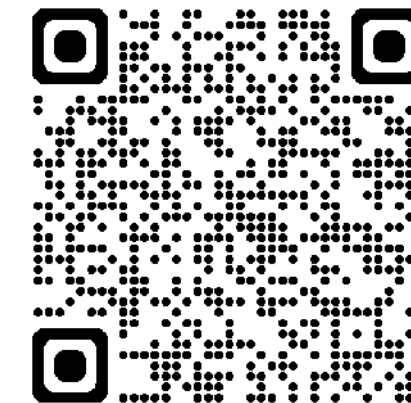


PT Petrosea Tbk

Wisma Barito Pacific
Jl. Let. Jend. S. Parman Kav. 62-63
Kelurahan Slipi, Kecamatan Palmerah
West Jakarta
Jakarta 11410 - Indonesia



2024
Annual Report



2024
Sustainability Report



www.petrosea.com



[@petrosea.official](https://www.instagram.com/petrosea.official)



[Petrosea](https://www.linkedin.com/company/petrosea)



[PT Petrosea Tbk](https://www.youtube.com/PTPetroseaTbk)